

NEW PLYMOUTH STEEL SUPPLIES LTD

Industrial Flooring

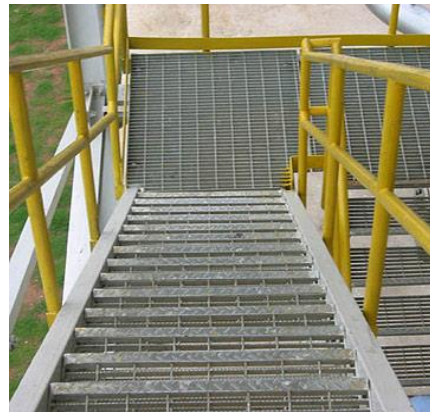
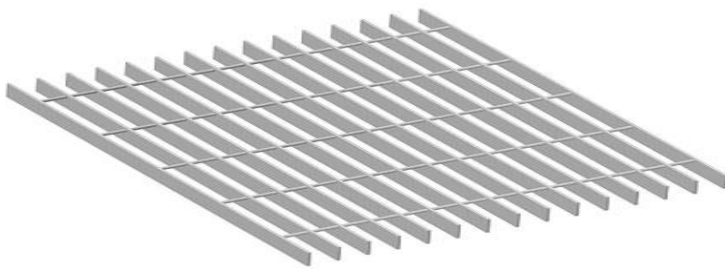
Welded Grating

**Please see sales staff for a brochure on profiles available*

Description: A multi purpose grating system suitable for a variety of common industrial applications
Supplied Plain or Serrated

Dimensions: Standard Panels 5800mm x 993mm, Can be supplied as Stair Treads

Material: Untreated mild steel, Hot Dip Galvanised



Expanded Metal - Mesh, Walkway & Platform

**Please see sales staff for a brochure on profiles available*

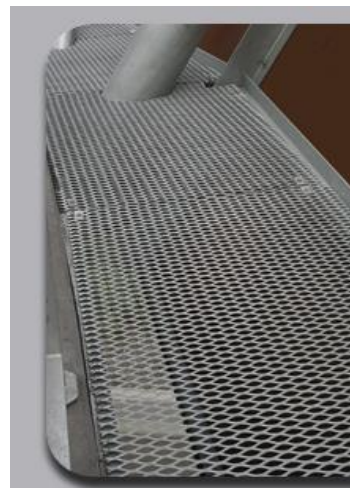
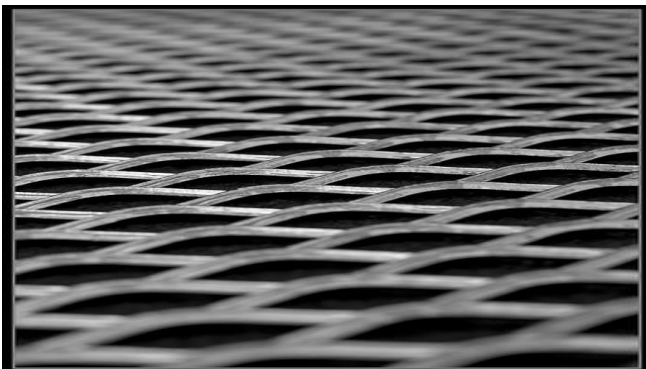
Description: In an expanding process, the sheet or plate is simultaneously slit & stretched longitudinally expanding the slits into diamond shaped holes of uniform size, shape and regularity. A solid sheet of metal becomes expanded metal without waste. The product that is lighter and stronger than the original sheet or plate

Raised: The strands and knuckles are set at a uniform angle to the plane of the sheet. This adds strength and rigidity, allows air circulation, and distributes the load onto the metal to the supporting frames

Flattened: The knuckles and strands are turned down to produce a smooth and flat surface, reducing the overall thickness and elongating the diamond pattern

Dimensions: Usually sheets 2400 x 1200mm please refer to brochure

Material: Mild steel, Hot Dip Galvanised, Aluminium



Locker Gripspan Grating

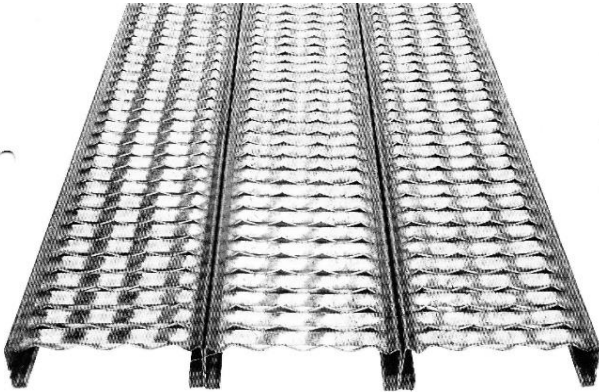
**Please see sales staff for a brochure on profiles available*

Description: A durable, efficient, bar type grating alternative that provides a safer walking/working surface

Usage: Roof walkways, Air conditioning platforms, vehicle wash down bays, stairways, pit covers, stock flooring, tanker walkways, ramps, spray booth flooring

Dimensions: 300mm or 225mm wide in stock planks of 6000mm lengths. Can be cut to length and supplied as pre bolted panels, fully fabricated panels, or Stairtreads

Material: Durable Steel, Aluminium, Stainless Steel



Tilley Q-Grating

**Please see sales staff for a brochure on profiles available*

Description: Open-type lightweight floor unit. Gives a non-slip surface in all directions.

Dimensions: 25mm, 314mm, 400mm wide

Material: Mild Steel, Hot Dipped Galv, Aluminium

Tilley Plank

**Please see sales staff for a brochure on profiles available*

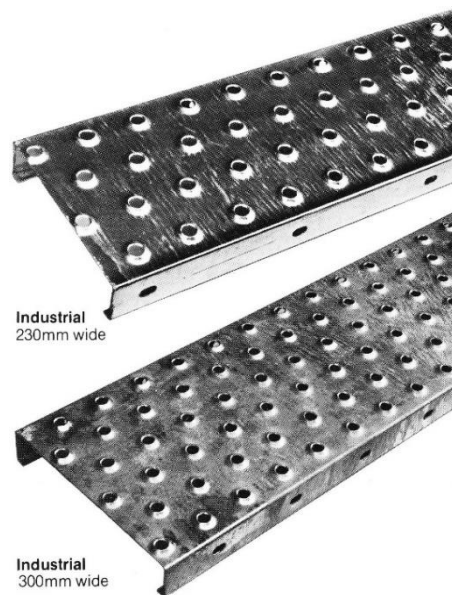
Description: Non-skid floor planking for safety hygenic walkways.

Designed to eliminate slippery conditions

Usage: Abattoirs, freezing works, dairy, power, marine, forestry and food industries.

Dimensions: 230mm & 300mm wide in 3 Mtr Lths
Stairtreads in 600mm, 750mm, and 910mm Lths

Material: Mild Steel, Hot Dipped Galv, Aluminium
Stainless Steel



Tilley Stud Plank

**Please see sales staff for a brochure on profiles available*

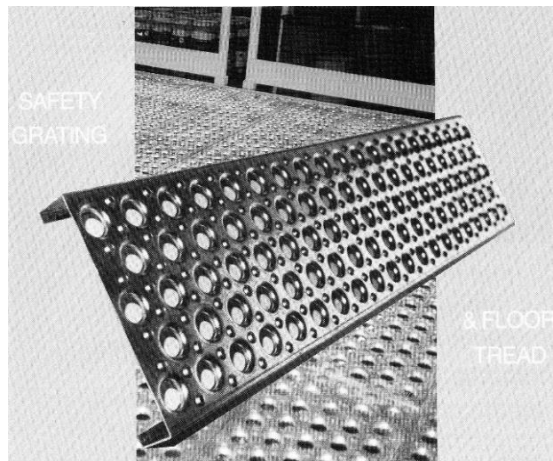
Description: This product offers rigidity, hygiene, safety and comfort in all applications, where rigidity, high drainage and non-slip is required. Round raised studs and large drain holes prevent dirt traps and allows easy flushing away of dirt and offal. Slipping in either direction is eliminated due to raised holes.

Usage: For applications in mining, timber mills, oil storage, fertiliser plants, power stations etc.

Dimensions: 265mm wide in lengths of 3 Metres
Non standard lengths can be made to order.

Stairtreads in widths of 618mm, 737mm, 916mm

Materials: Mild Steel, Pre Galv, HD Galv



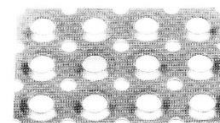
Safe-T-Perf

**Please see sales staff for a brochure on profiles available*

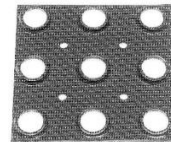
Description: A combination of flanged, raised circular perforations and secondary drainage holes, providing dependable non-slip grip in all directions.

Dimensions: Sheets, Planks, Stairtreads

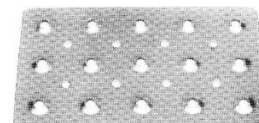
Materials: Mild Steel, Galv, Stainless, Aluminium



STOCK CRATE - 19



UNIVERSAL - 14



STILETTO - 6

Tubular Handrail Systems - AS 1657

**Please see sales staff for a brochure on profiles available*

Tube Stanchions: 48.3 OD x 40 NB x 3.2 WT

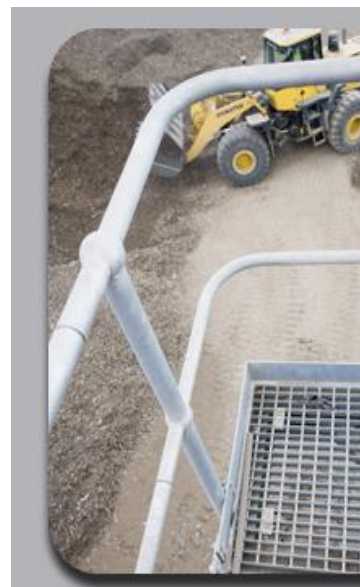
Rail Specifications:

Handrail - 42.4 OD x 32 NB

Kneerail - 33.7 OD x 25 NB

Stanchions are drilled to suit above rail.

Finish: All items hot dipped galvanised



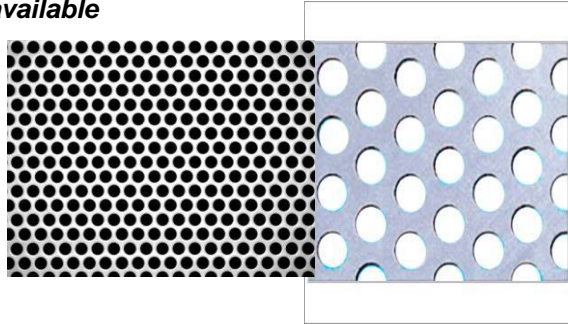
Perforated Metal

**Please see sales staff for a brochure on profiles available*

Description: Sheet construction retains material strength at a reduced weight.

Usage: Used for noise reduction in large open spaces, feature walls, fascias, Ballustrade panels, sunscreens, canopy structures, 360 degree safety on walkways & ramps

Material: Mild Steel, Galv, Stainless, Aluminium

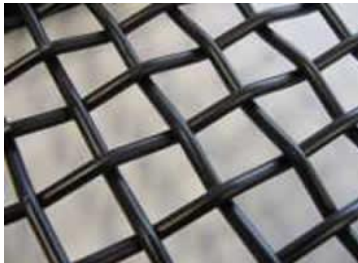


Woven Wire

**Please see sales staff for a brochure on profiles available*

Screencloths for Mining & Quarrying

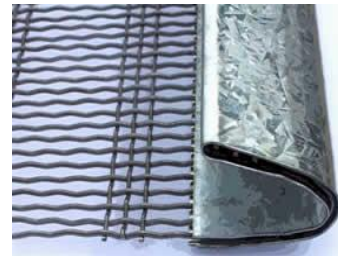
Description: A wear-resistant screen mesh manufactured from high tensile or stainless steel wire that incorporates a special quality manganese content. This mesh is highly recommended for screening materials such as shingle, rock, sand, gold, lime, soil, and coal.



Std Square Apt Screens
High Tensile or Stainless



Slotted Meshes
High Tensile or Stainless



Wire Agvibes & Polyvibe
Screens

Woven Wire Flooring

Description: Widely used for flooring in the transportation and holding of animals.

Usages: Woolsheds, Abattoirs, Stock Crates, Goat & Deer Pens, Cattle and Calf Food Baths

Dimensions: Manufactured to suit individual requirements. Up to 7 Mtrs long x 2.5 Mtrs wide

